



HEAVYROLL

INFO & PROCESSING INSTRUCTIONS



NEW YORK 10 cm



NEW YORK MIX



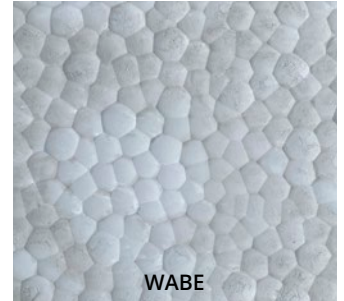
NEW YORK 20 cm



NEW YORK ANTHRACITE



NEW YORK MIX 10 cm



WABE



VINTAGE CONCRETE



PALM TREE RUST



MIKADO RUST



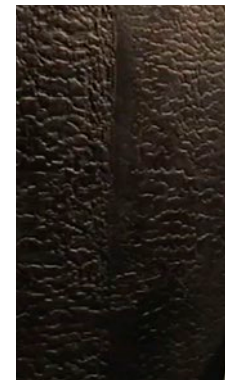
MIKADO COPPER



TITANIC



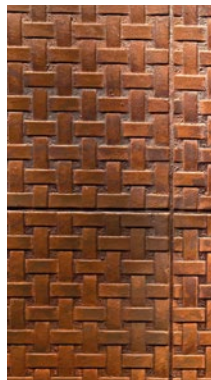
MATRIX



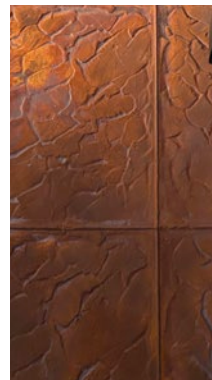
POMPEII



PALM TREE GREY



RIBBON



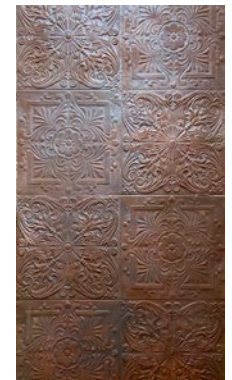
RUSTIC IRON



SQARE



SQUARE BLACK



ROKOKO

STONESLIKESTONES®
create your wall

www.stoneslikestones.eu

© 2022 Stones like Stones GmbH® · Ruhrau 41 · 45279 Essen
Reproduction in any form only with written permission. Version 092622

HEAVYROLL

INFO & PROCESSING INSTRUCTIONS



■ HR-01 Narrow Plank,
10 cm, grey




Video Brandschutz



Material description

The rolls have an average weight of 6–8 kg and are made of stone powder and mineral mass on a cement basis, with further minerals and pigments. The carrier is a fiberglass mat.

- ▶ The material is waterproof ▶ UV resistant
- ▶ Fireproof class A2 

Decors

- HeavyRoll ■ HR-01 Narrow Plank in 10 cm, grey
- NEW YORK** ■ HR-01A Narrow Plank in 10 cm, anthracite
- HR-02 Narrow Plank in 10 cm, grey, mixed lengths
- HR-03 Wide Plank in 20 cm, grey
- HR-04 Plank mix 10&20 cm, grey
- HR-15 HeavyRoll **WABE**, grey
- HR-16 HeavyRoll **VINTAGE CONCRETE**, grey
- HR-05 HeavyRoll **PALM TREE**, rust
- HR-06 HeavyRoll **MIKADO**, rust
- HR-07 HeavyRoll **TITANIC**, rust
- HR-09 HeavyRoll **MATRIX**, rust
- HR-09 HeavyRoll **MATRIX**, copper
- HR-11 HeavyRoll **RIBBON**, rust
- HR-12 HeavyRoll **ROKOKO**, rust
- HR-13 HeavyRoll **SQUARE**, rust
- HR-14 HeavyRoll **RUSTIC IRON**, rust
- HR-08 HeavyRoll **POMPEII**, burned

Dimensions

One sheet of HeavyRoll NEW YORK measures approx. 300 x 98–102 cm, with a material thickness of approx. 2–4 mm.

The dimensions depend on the design of the ornamental motifs, please call for details. You can see all samples on the Internet.

Transport

The sheets can be rolled and are temperature-independent.

HEAVYROLL

INFO & PROCESSING INSTRUCTIONS

Cleaning

The surface can be cleaned with soap and water.

Tools



► a sharp cutter knife



► Folding rule ► a pencil



► a rail as long as possible for possible cutting to size

► a wide brush for brushing the bonded surface of the RollBeton

► a foam rubber roller for rolling the track onto the wall surface

► tape to cover the joints

► tape to cover the joints

Personal protective equipment

► We recommend wearing gloves and a coarse dust mask during application.

Cutting



The rolls are usually left a little longer and must be cut precisely before installation. Cutting is done with a cutter knife.

Bonding

For sheetrock walls and masonry, the surface is pretreated with depth primer then you can work with tile adhesive, for example with SOPRO Classic plus - SC 808 or Kerakoll H40® No Limits®.

In the case of absorbent ground, the surface is pre-treated with deep primer.

The tile adhesive is applied with a 5 or 8 tooth trowel.

► The colour of the tile adhesive should be adjusted to the colour of HeavyRoll with **MIXOL black** so that the adhesive does not stand out.

Important notice

► All HeavyRoll concrete and rust decors can vary in color shade due to the manual production process. In this case, the surfaces of the webs appear differently modulated lighter or darker. The effect cannot be controlled, therefore orders are supplied from one batch if possible.

► Especially the rust surfaces should be sealed after installation in any case, whereby the color tone can become more intense or darker.



HEAVYROLL

APPLICATION EXAMPLES

heavyroll.de



HeavyRoll is used where a lively structure is required, when surfaces are to show wooden planks, patterns with rivets or other motifs. HeavyRoll can be used to recreate the flair of a textured, poured concrete wall. Simply delivered as a roll, the product is put to use and is particularly interesting for the catering trade, in shop and trade fair construction as well as for modern office and residential design.

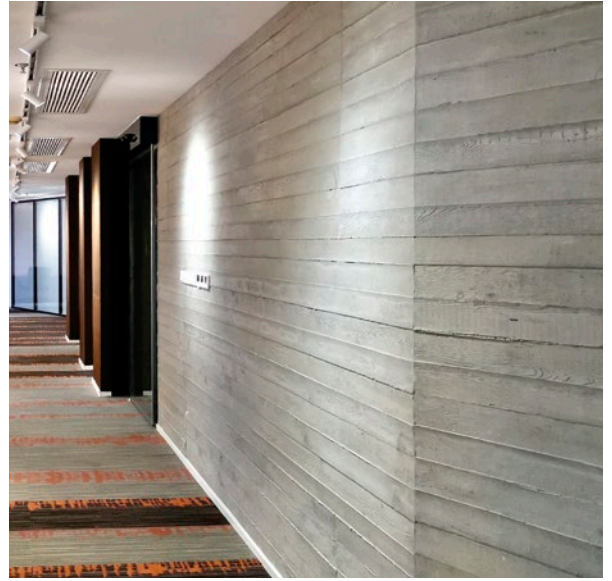
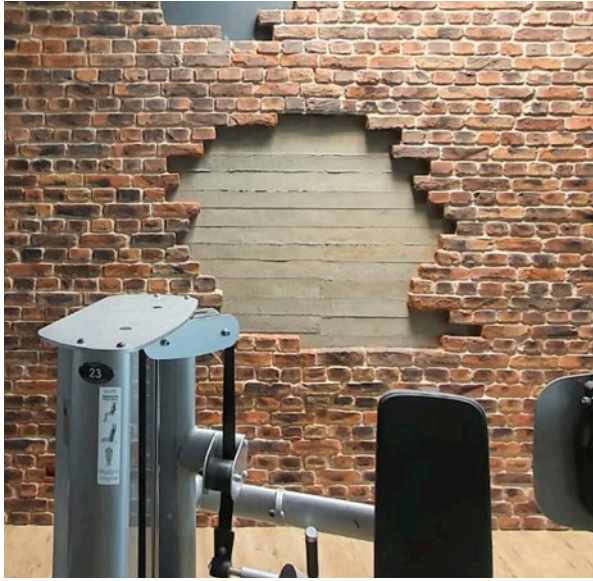
STONESLIKESTONES®
create your wall

www.stoneslikestones.eu

© 2022 Stones like Stones GmbH® · Ruhrau 41 · 45279 Essen
Reproduction in any form only with written permission. Version 092622

HEAVYROLL

APPLICATION EXAMPLES



heavyroll.de

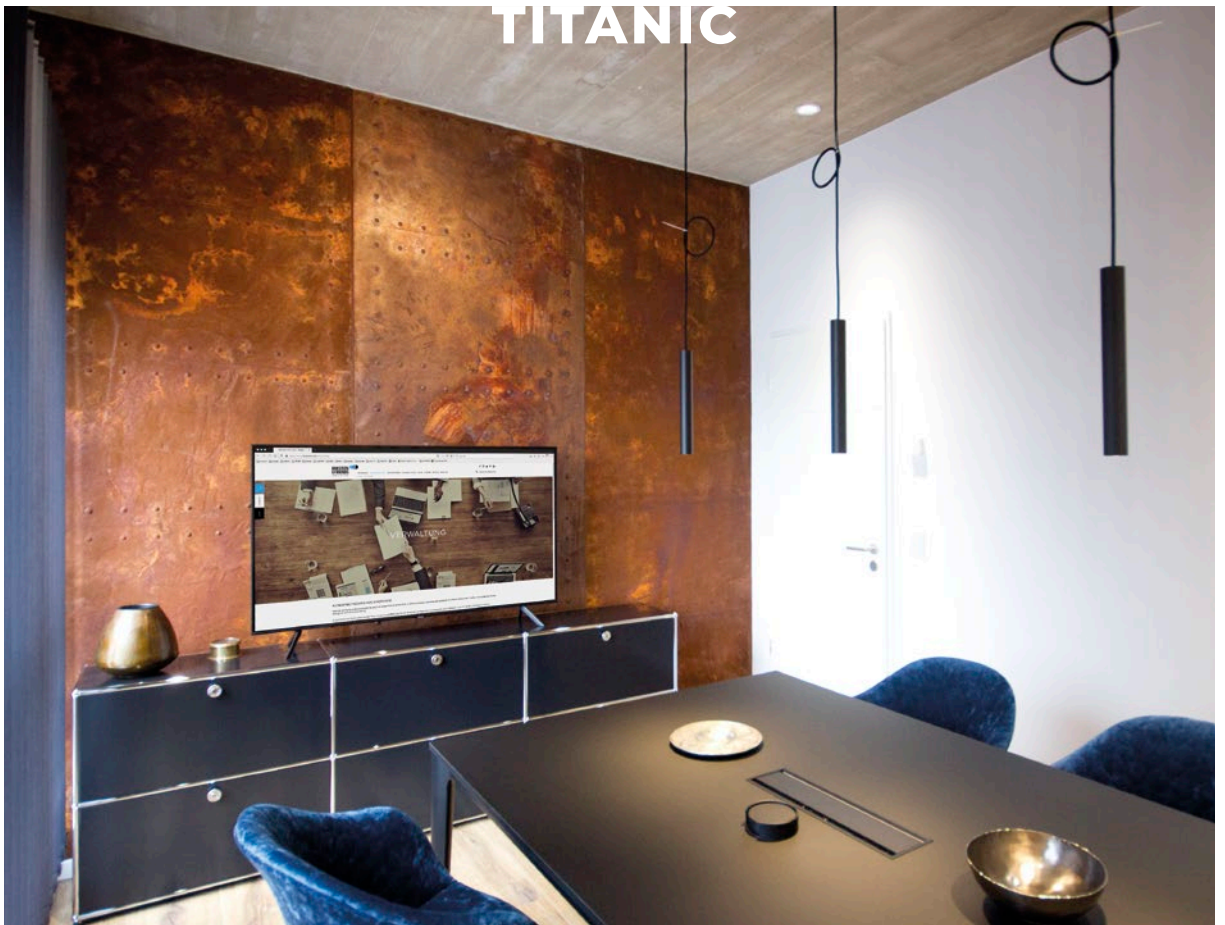
STONESLIKESTONES®
create your wall

www.stoneslikestones.eu

© 2022 Stones like Stones GmbH® · Ruhrau 41 · 45279 Essen
Reproduction in any form only with written permission. Version 092622

HEAVYROLL

APPLICATION EXAMPLES



heavyroll.de

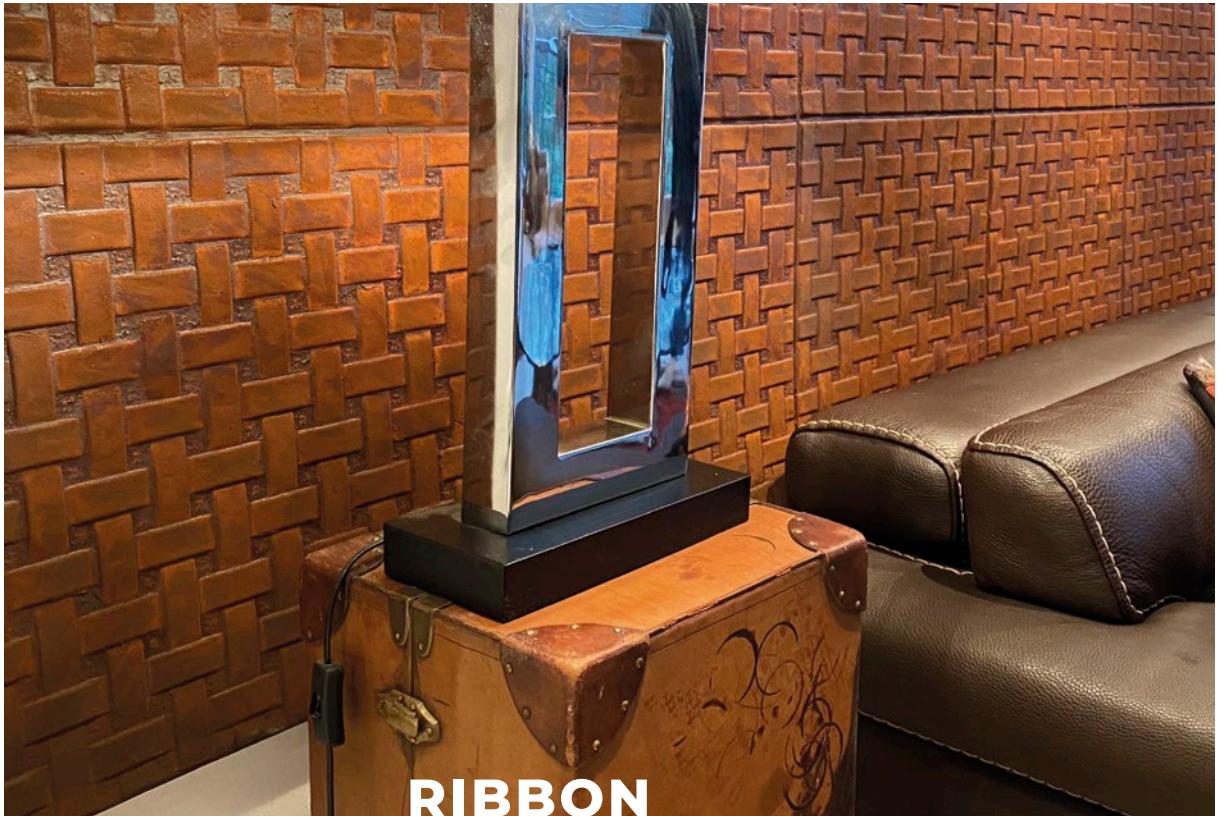
STONESLIKESTONES®
create your wall

www.stoneslikestones.eu

© 2022 Stones like Stones GmbH® · Ruhrau 41 · 45279 Essen
Reproduction in any form only with written permission. Version 092622

HEAVYROLL

APPLICATION EXAMPLES



heavyroll.de

STONESLIKESTONES®
create your wall

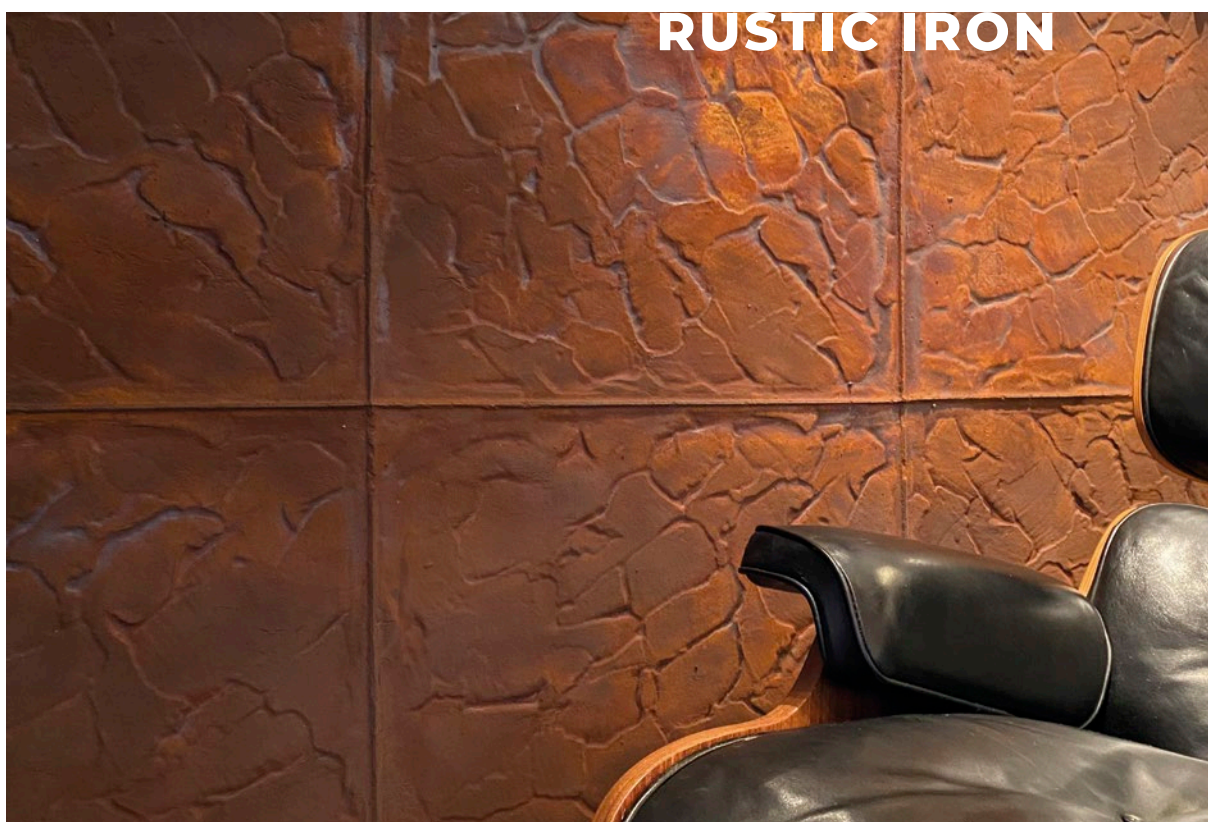
www.stoneslikestones.eu

© 2022 Stones like Stones GmbH® · Ruhrau 41 · 45279 Essen
Reproduction in any form only with written permission. Version 092622

HEAVYROLL

APPLICATION EXAMPLES

heavyroll.de



STONESLIKESTONES®
create your wall

www.stoneslikestones.eu

© 2022 Stones like Stones GmbH® · Ruhrau 41 · 45279 Essen
Reproduction in any form only with written permission. Version 092622

STONES
LIKE
STONES®
GMBH

create your wall



D-45279 Essen-Steele · Ruhrau 41 · Tel. +49 (0) 201-523677-0 · Fax +49 (0) 201-523677-19 · info@stoneslikestones.de

www.stoneslikestones.eu